

Positions for internship or Bachelor/Master thesis



Start: (approximate) April/May 2025
Duration (data collection): 1-3 months

Investigating bee and wasp multi-trophic interactions in BEF-China

Background

To understand how tree diversity is linked to biomass production, element cycling and species conservation, we identify mechanisms underlying the relationships between biodiversity and ecosystem functions in the largest forest biodiversity experiment worldwide located in subtropical China.

Methods

Students will record cavity-nesting Hymenoptera and associated food resources and parasites in the context of the **BEF-China** forest experiment (<https://bef-china.com/>), to measure multi-trophic interaction networks and evaluate the effect of tree diversity on network structure.

The students can do their bachelor/master's thesis as part of this work.

Requirements

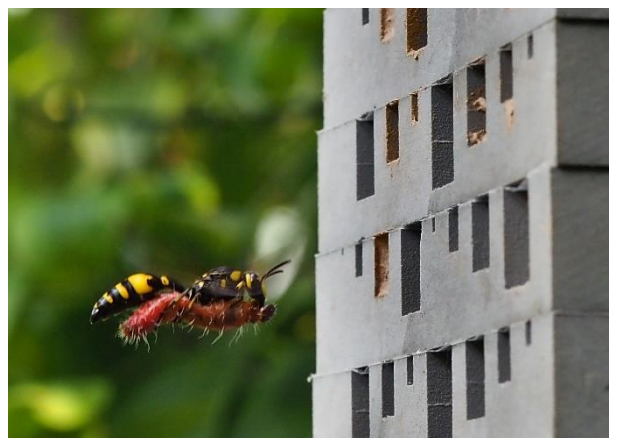
We are looking for highly motivated and independent candidates that will stay several months in the hot and humid climate of south-east China. Basic knowledge of **entomology** and experience with previous field/lab work and data collection & analysis are highly welcome but not requisites.



What we offer

Costs for travelling, accommodation, and a student contract for the duration of the field period.

Please send an email with CV and a brief presentation letter describing your experience, motivation, and when and how long you would be willing to participate.



Contact:

Massimo Martini - massimo.martini@mail.nature.uni-freiburg.de